

AGENDA

Meeting: Royal Wootton Bassett and Cricklade Area Board
Place: Royal Wootton Bassett RFC, Malmesbury Road, Royal Wootton Bassett, SN4 8DS
Date: Wednesday 10 January 2018
Time: 7.00pm, with networking and refreshments from 6.00pm

Including the Parishes of Braydon, Broad Town, Clyffe Pypard, Cricklade, Latton, Lydiard Millicent, Lydiard Tregoz, Lyneham & Bradenstoke, Marston Meysey, Purton, Tockenham and Royal Wootton Bassett.

The Area Board welcomes and invites contributions from members of the public. The chairman will try to ensure that everyone who wishes to speak will have the opportunity to do so.

If you have any requirements that would make your attendance at the meeting easier, please contact your Democratic Services Officer.

Please direct any enquiries on this Agenda to Kevin Fielding (Democratic Services Officer), direct line 01249 706612 or email kevin.fielding@wiltshire.gov.uk

All the papers connected with this meeting are available on the Council's website at www.wiltshire.gov.uk

Press enquiries to Communications on direct lines (01225) 713114 / 713115

Wiltshire Councillors

Cllr Allison Bucknell, Lyneham
Cllr Mollie Groom, Royal Wootton Bassett East
Cllr Mary Champion, Royal Wootton Bassett North
Cllr Jacqui Lay, Purton
Cllr Chris Hurst, Royal Wootton Bassett South
Cllr Bob Jones MBE, Cricklade and Latton

RECORDING AND BROADCASTING NOTIFICATION

Wiltshire Council may record this meeting for live and/or subsequent broadcast on the Council's website at <http://www.wiltshire.public-i.tv>. At the start of the meeting, the Chairman will confirm if all or part of the meeting is being recorded. The images and sound recordings may also be used for training purposes within the Council.

By entering the meeting room you are consenting to being recorded and to the use of those images and recordings for broadcasting and/or training purposes.

The meeting may also be recorded by the press or members of the public.

Any person or organisation choosing to film, record or broadcast any meeting of the Council, its Cabinet or committees is responsible for any claims or other liability resulting from them so doing and by choosing to film, record or broadcast proceedings they accept that they are required to indemnify the Council, its members and officers in relation to any such claims or liabilities.

Details of the Council's Guidance on the Recording and Webcasting of Meetings is available on request.

	Time
<p>1 Networking Session</p> <p>Alzheimer’s Society Side-by-Side Programme</p> <p>RWB Local Youth Network meeting</p> <p>Wiltshire Council health trainer Jan Bardwell will be on hand to assist you every step of the way to achieving and maintaining your health and fitness goals</p>	6:00pm
<p>2 Chairman's Welcome and Introductions</p>	7:00pm
<p>3 Apologies for Absence</p>	
<p>4 Minutes (<i>Pages 1 - 6</i>)</p> <p>To approve the minutes of the meeting held on Wednesday 8 November 2017</p>	
<p>5 Declarations of Interest</p> <p>To receive any declarations of disclosable interests or dispensations granted by the Standards Committee</p>	
<p>6 Wiltshire - The Wider Picture</p> <p>News and information on what’s going on in your local community and across the county</p> <ul style="list-style-type: none"> • Office of the Police and Crime Commissioner- Precept Consultation 	
<p>7 Strengthening our Communities (<i>Pages 7 - 26</i>)</p> <p>Improving and maintaining wellbeing and mental health</p> <p>Wiltshire Council Public Health Consultant Karen Spence offers an interactive session designed to raise awareness of mental health and wellbeing, increase understanding and reduce stigma and discrimination.</p>	

Grant feedback will be received from the Launch 2 Learning media project at RWB Academy

Grant Funding

New Grant Applications January 2018

Cricklade leisure centre - seeking £1,346.00 towards a defibrillator to be sited outside the leisure centre (deferred from November meeting)

Noremarsh Junior School - seeking £5,000.00 towards completion of an all weather running track to enhance provision of all pupils and to extend the facilities available to the community

Purton Parish Council – seeking £770.00 towards footpath improvement under the Paths Improvement Grant Scheme FP84

White Horse Trail councillor initiative – seeking £250 for improvement to the White Horse interpretation board at Broad Town (please see separate councillor initiative report)

8 **Spotlight on Parishes and Partners** *(Pages 27 - 52)*

To receive updates from our key partners, including:

- Wiltshire Police
- Dorset and Wiltshire Fire & Rescue Service
- Greensquare
- CMAS
- NHS Wiltshire
- Healthwatch Wiltshire
- Recycle for Wiltshire
- Parish and Town Councils

9 **Task Group Reports and Decisions** *(Pages 53 - 66)*

To consider reports from the following task groups and make any necessary decisions:

- Community Area Transport Group
- Wiltshire Wildlife Trust

MINUTES

Meeting: ROYAL WOOTTON BASSETT AND CRICKLADE AREA BOARD
Place: REME Museum, Lyneham
Date: 8 November 2017
Start Time: 7.00 pm
Finish Time: 8.40 pm

Please direct any enquiries on these minutes to:

Kevin Fielding, direct line 01249 706612 or e-mail kevin.fielding@wiltshire.gov.uk

Papers available on the Wiltshire Council website at www.wiltshire.gov.uk

In Attendance:

Wiltshire Councillors

Cllr Allison Bucknell, Cllr Mary Champion, Cllr Mollie Groom, Cllr Bob Jones MBE and Cllr Jacqui Lay

Wiltshire Council Officers

Alexa Davies – Community Engagement Manager
Kevin Fielding – Democratic Services Officer
Jan Bardwell – Health Trainer

Town and Parish Clerks/Councillors

Cricklade Town Council – Sue Holbrook & John Coole
Lydiard Millicent Parish Council – Deborah Bourne & Mike Sharp
Purton Parish Council – Ray Thomas
Royal Wootton Bassett Town Council – Sue Hughes, Nic Hughes & Johnathon Bourne
Tockenham Parish Council – Diana Kirby

Partners

Wiltshire Wildlife Trust – Jessica Thimbleby & Gary Mantle

Total in attendance: 54

<u>Agenda Item No.</u>	<u>Summary of Issues Discussed and Decision</u>
29	<p><u>Chairman's Welcome and Introductions</u></p> <p>The Chairman welcomed everyone to the meeting of the Royal Wootton Bassett & Cricklade Area Board and to the REME Museum.</p> <p>The councillors and officers present were introduced.</p> <p>The Chairman thanked Wiltshire Wildlife Trust and John Stanwix from SEAP (Support, Empower, Advocate, Promote) Military Advocacy for their displays prior to the meeting.</p>
30	<p><u>Apologies for Absence</u></p> <p>Apologies for absence were received from:</p> <p>Cllr Chris Hurst – Wiltshire Council, Mark Clarke – Cricklade TC, John Davies – RWB Arts Festival, Andrew Harris – Lydiard Millicent PC and Steve Palmer</p>
31	<p><u>Minutes</u></p> <p>Decision</p> <ul style="list-style-type: none"> • The minutes of the meetings held on Wednesday 27 September 2017 were agreed a correct record and signed by the Chairman.
32	<p><u>Declarations of Interest</u></p> <p>There were no declarations of interest.</p>
33	<p><u>Wiltshire - The Wider Picture</u></p> <p>The following Chairman's Announcements were noted:</p> <ul style="list-style-type: none"> • Wiltshire Local Plan Review • Waste & Recycling Review • Parking Charges

Strengthening our Communities

Rebecca Seymour gave a short presentation that outlined forthcoming free, fun local events and activities for our older people.

Points made included:

- The need to support isolated older people.
- The importance of working with people who still live in their own homes.
- That good work was being carried out with local GPs and care co-ordinators in the local area.

Jessica Thimbleby - Wiltshire Wildlife Trust gave an update on their Campaign Plan for RWB&C.

Points made included:

- Workshops carried out with Purton & Lydiard Scout Group to make sure they all know what to recycle at home and how to reuse rubbish with some upcycled wildlife gardening.
- Thames Preschool - waste workshops, staff training and going for our Wiltshire Waste Watcher Award
- Waste workshops with the Little Stars Babes & Tots group in RWB and will be working with Sunny Days Nursery in Lyneham
- Worked in Lyneham Primary, St Bartholomew's Primary Academy and RWB Academy and during November we'll be working in St Mary's CE Primary School, Purton.
- Aim to work in at least two more schools (so one per councillor division).
- Attended the Cricklade Bloomers Grand Opening – promoting 'upcycling' unwanted household items in the garden.
- RWB Library September recycling display during Recycle Week.
- Carried out half-term Halloween events – story-telling and Halloween crafts in RWB Library and pumpkin carving and soup making at MOD Lyneham Community Centre.
- Sign-ups for tour of Wiltshire's Materials Recovery Facility and Landfill site now being organised.

Gary Mantle – Wiltshire Wildlife Trust gave a brief presentation on the Trust's plans to purchase Morningside Farm, a set of rare hay meadows on the edge of Royal Wootton Bassett.

It was hoped that the Area Board would support Wiltshire Wildlife Trust in it's bid to purchase the meadows.

Decision

- **It was agreed that the Area Board would publicise the Wiltshire Wildlife Trust bid to buy the meadow.**
- **That the project would come back to a future Area Board meeting for discussion when Wiltshire Wildlife Trust had developed a business plan for the project.**

REME Museum – Major Rick Henderson gave a brief update on the Museum.

Points made included:

- That the museum contained seven galleries of exhibits.
- That the museum was available for corporate bookings.
- That next year the museum would be holding various events to celebrate 100 years of the RAF.

Defence School of Electronic and Mechanical Engineering - Commandant Ed Heal gave a brief update on the Defence School and wider community integration.

Points made included:

- That some 1,500 young people were learning to repair Army equipment on site at Lyneham.
- Over 100 were under 18's.
- That the Defence School of Electronic and Mechanical Engineering were keen to be an active part of the Lyneham community.
- That DSEME were would be happy to become involved with community outreach activities.

	<p>Meet the team - Cllr Mary Champion gave a brief overview of her role as councillor for RWB North.</p> <p>Grant feedback – Bonnie Maslin - Lyneham Primary School gave a brief presentation on how the school was benefitting from their new sensory room, with part-funding from the community grant scheme.</p> <p>Grant Funding</p> <p>Broad Town WI awarded £945.00 towards purchase and installation of a defibrillator on the outside of Broad Town Village Hall.</p> <p>Purton Parish Council awarded £4,612.50 towards ANPR and close circuit CCTV system at Purton Village Centre community facility.</p> <p>Marston Meysey Village Hall Association awarded £5,000 towards replacement of the village hall roof.</p> <p>Purton and District Age Concern awarded £5,000 for a new specialised minibus with the condition that Area Board funding would only be granted when funding from other funding streams was also awarded.</p> <p>Wiltshire and Berkshire Canal Trust – seeking £2,178.00 for finger posts and a mower for the Studley Grange site. Deferred to the next meeting.</p> <p>Cricklade leisure centre – seeking £1,346.00 towards a defibrillator to be sited outside the leisure centre. Deferred to the next meeting as no representatives were in attendance.</p> <p>Area Board initiative: £390.00 awarded for 13 weeks Royal Wootton Bassett Memorial Hall hire @ £30 a session for new Seated Sports provision.</p>
35	<p><u>Spotlight on Parishes and Partners</u></p> <p>Updates were received from the following Partners, Towns and Parishes:</p> <ul style="list-style-type: none"> • Wiltshire Police - the written report was noted.

	<ul style="list-style-type: none"> • Dorset and Wiltshire Fire & Rescue Service - the written report was noted. • Greensquare - the written report was noted. • Recycling for Wiltshire Joint Venture - the written report was noted. • Community Monitoring and Support - the written report was noted. • Cricklade Town Council – the written report was noted. <p>The Chairman thanked all partners for their updates.</p>
36	<p><u>Task Group Reports and Decisions</u></p> <ul style="list-style-type: none"> • The Community Area Transport Group (CAT-G) – next Meeting on Wednesday 6 December 2017.
37	<p><u>Wrap Up</u></p> <p>Next meeting: Wednesday 10 January 2018.</p>

Chairman's Announcements

Subject:	Office of the Police and Crime Commissioner 2018 Precept Proposal Consultation
Officer Contact Details:	pcc@wiltshire.pcc.pnn.gov.uk

Residents asked if they would pay an extra £1 a month to protect local policing

"Would you be prepared to pay an extra pound a month to protect our police Force?" That's the question being asked by Police and Crime Commissioner for Wiltshire and Swindon Angus Macpherson.

The policing precept consultation which launches 2 January is looking for the views of Wiltshire residents on the proposed increase of £12 a year.

Currently the average band D household contributes £14.19 per month to local policing, but if residents back the proposal then this would rise to £15.19 per month.

Angus Macpherson said, "As a Force, Wiltshire Police has seen the second highest increase in demand across the country in the last year yet the funding we receive from central government doesn't recognise the increasing pressures our service is under.

"In fact we receive the fourth lowest funding per head of population in England and Wales.

Since 2010, Wiltshire Police has received £19 million less but have been responding to more crimes and supporting more members of the public year on year.

Mr Macpherson added, "Whilst we live in an incredibly safe county, there's only so far the budget will stretch and we're streamlining our services to ensure they're as efficient as possible at the same time as keeping the public safe, but we are feeling the squeeze more than ever.

"Without this increase Wiltshire Police will have to look at further reductions in officers and staff to close a budget gap of around £3m.

"That's why I'm asking whether residents in Wiltshire and Swindon would be prepared to pay an extra £1 a month to help bridge this gap.

"This increase will mean that I can protect frontline services from further reductions and maintain the current level of service."

The consultation which runs from 2nd January 2018 to midday 31st January 2018 wants to hear your views on the proposed increase.

For more information on how to share your views please visit www.wiltshire-pcc.gov.uk, you can also email pcc@wiltshire.pcc.pnn.gov.uk or use #AskAngusPCC on social media.



Royal Wootton Bassett and Cricklade Community Identified Priorities Newsletter. November 2017

Children and Young People

RWB and Cricklade Community Area

What has been done so far:

1. A **mental health themed 'takeover'** of the Area Board meeting is taking place on Wednesday 10th January 2018 at 7.00pm at RWB rugby football club - this session is designed to raise awareness of mental health and wellbeing, increase understanding and reduce stigma and discrimination. It has been introduced in response to the prioritisation of mental health by the community through the Joint Strategic Assessment process.

The session itself is interactive and is suitable for both professionals and members of the public. It focuses strongly on how to improve and maintain wellbeing and mental health.

1. Evaluation of the **Launch 2 Learning** filming project funded by the Area Board to address **cyber-bullying and self-esteem issues** will be presented at the January Area Board meeting by Marie Wykes.
2. Working with Public Health, a new offer to help schools '**Beat the Bugs**' and so reduce school absence is available to local primary schools. Please contact your CEM if your primary school is interested, alexa.davies@wiltshire.gov.uk, 01249 706610.
2. In November 2017, Nick Bolton from Wiltshire Council ran a **Healthy Schools** training day, supported by funding from the Area Board. Four local schools completed the training and will be benefitting from committing to an action to make their school and pupils healthier, these schools were:

Longleaze Primary School
Lyneham Primary School
Noremarsh Junior Community School
St Bartholomew's Primary Academy

Well done to everyone who took part in the training day! The programme accredits schools that have provided evidence to show how their provision effectively supports the health and wellbeing of their pupils. Schools can work towards bronze, silver or gold levels to achieve Wiltshire Healthy Schools status. To be accredited schools need to meet certain standards based on local and national priorities.

Further information about our Healthy Schools programme and the schools which are involved can be found at <http://www.wiltshirehealthyschools.org/about/>

3. Cllr Sue Hughes from RWB TC has been working with local youth to set up a Locality Youth Network to look at youth leisure activity provision in the area. First meeting is scheduled for 10th January 17.30 ahead of the Area Board meeting at RWB RFC.

Priorities November 2016

1. Mental and emotional health (65.12%)
2. Educational attainment (63.95%)
3. Positive leisure time activities (55.81%)



Royal Wootton Bassett and Cricklade Community Identified Priorities Newsletter. November 2017

Community Safety

RWB and Cricklade Community Area

What has been done so far:

1. In early December, councillors met with Ben Evans, Managing Director from **Community Mentoring And Support (CMAS)** to find out how their street based youth work in Cricklade was going.

This targeted piece of work had been commissioned by the Area Board to help the town address the ASB taking place.

Ben reported that the group in Cricklade who had been causing issues had now on the whole divided up and tended to hang out either by the surgery or the park. Moving forwards, holding a weekly CMAS session inside was agreed and a venue for this was being looked into by Cllr Bob Jones.

Preventative work is being delivered by CMAS in Lyneham and RWB through the successful youth groups, each attracting circa 30 young people, with PCSOs also dropping in to the youth groups.

Purton was raised as also having some ASB issues in the community. As funding for this year had already been fully committed, options for commissioning work would be re-considered in the new financial year 2018/19.

2. The Community Area Transport Group continues to work towards making highways improvements, (please see CATG report). The CATG process was being reviewed in order to make it simpler for people to use well and understand. This was happening alongside promotion of the **My Wiltshire App** as a means of reporting issues directly to the Wiltshire Council services which can help, e.g. as a way to report potholes. A session on using the My Wiltshire app will be coming up at a future Area Board meeting, please watch this space!

Dorset & Wiltshire Fire and Rescue Service have launched a new campaign targeted at parking which makes it impossible for appliances to get through to an emergency. Please see the flyer in the image at the bottom of this page.

3. The Victim Support service is available to support anyone living with domestic abuse, see here for further information: <https://www.victimsupport.org.uk/>

Priorities November 2016

1. Anti-social behaviour (70.59%)
2. Highway safety (63.53%)
3. Domestic violence (50.59%)





Royal Wootton Bassett and Cricklade Community Identified Priorities Newsletter. November 2017

Culture

RWB and Cricklade Community Area

What has been done so far:

1. The first **Celebrating Age** event was a fantastic success, held on Tuesday 28th November at Lyneham Village Hall 'Around the World in 80 Days' was performed by Angela Laverick, complete with audience participation and followed by a fish and chips lunch for the 3M's memory group.

This was the start of a monthly programme of cultural events brought into the local area funded mainly by the Arts Council and supported by the Area Board. Events will initially be free of charge, targeted towards celebrating older people and move venues around the whole community area.

The next event is: 'Journey through the dance bands of the 1920s-40s' at Ridgeway House, The Lawns, Royal Wootton Bassett. On Friday 12th January from 10.30am–12 noon, join **Duncan Galloway**, band leader of the Pasadena Roof Orchestra, for a trip down memory lane, as he takes you through a short history of the dance bands from the 1920s-40s.

The talk will be illustrated with images, film footage and Duncan himself giving the occasional impression of your favourite crooners! This is a free event, with teas and coffees provided, donations are welcome 😊

1. A **Community Asset List** has been put together to allow community groups, charities and town and parish councils to share their assets locally and we've had our first request! The Our Community Matters website will be updated in the New Year and once this is complete, the asset list will be available to all from the website. If you have an asset you are willing to share with your neighbours, please don't hesitate to get in touch: alexa.davies@wiltshire.gov.uk, 01249 706610.
2. Plans continue to develop for investment into RWB library to become **Royal Wootton Bassett Community Hub and Library**, in line with the Calne model and working in partnership with RWB Town Council.

The remodelling of the Royal Wootton Bassett Hub and Library has been delayed to give us more time to plan and design the right type of facility that the local area deserves. While we had planned a flexible space that meets the community's needs and those of our partners, we didn't feel the initial plans would achieve that. With this in mind, we instructed architects to redraw and improve the plans in order to get the most out of the new facility, and we hope to appoint builders to begin the project in early 2018. We expect the building to be completed by summer 2018, and are working in partnership with Royal Wootton Bassett Town Council to deliver a top-class facility for the town and surrounding area.

Priorities November 2016

1. Affordable access to cultural activities (73.26%)
2. Library use (58.14%)
3. Diversity and social inclusion (58.14%)



Royal Wootton Bassett and Cricklade Community Identified Priorities Newsletter. November 2017

Economy

RWB and Cricklade Community Area

What has been done so far:

1. Please see previous newsletter for an update on **Bassett Apprenticeships Fair**.

December saw Belinda Showering from the Adult Social Care team at Wiltshire Council doing some work shadowing of the Area Board in order to

better understand what we do and improve integration between communities and the adult social care team. We'll be catching up with Belinda in the New Year and report back learnings to help improve the service offer to local people.

2. **Improving opportunities for ex-military personnel** through training and skills is an area which John Stanwix from Support Empower Advocate Promote (SEAP) military advocacy is helping to address locally. John was at the November Area Board meeting and is interested in holding sessions in the RWB community hub and library once it is ready.

2. **Learndirect** are also keen to be a partner in the new community hub, providing **FREE training courses** to support **over 50s** developing digital skills to help them re-enter the workplace.

3. Your CEM is working with TEN4Biz to put together an exciting and inspiring programme for Swindon & Wiltshire's **Women in Business Conference 2018**. We're bringing together entrepreneurs and businesswomen from across the south west - and we reach many more through the media, blogs and [videos](#). This year's focus will be innovation and creativity, offering a great opportunity for businesswomen to learn, reach out and connect. The event is back at the fabulous Bowood Estate, once more celebrating International Women's Day on Thursday 8th March, save the date! Just a heads up - #WiB2018 now online on Eventbrite at www.wib2018.eventbrite.co.uk.

2. With some lucky people receiving new techie gifts for Christmas, remember there is a great group of **WithIT** volunteers at the **RWB library on Mondays 10-11am** who are able to help you learn to use your device completely for free.

In Cricklade, the group of digi-champions meet in the **Cricklade leisure centre cafe on Mondays 10-12 noon** and are happy to help anyone keen to get to grips with their technology! Why not pop along to see if they can help you? Of course, if you are a whizz with technology, perhaps you could support others to learn? Drop in to find out more.

Priorities November 2016

1. Apprenticeship and work experience (71.43%)
2. Training and skills (70.24%)
3. Broadband and digital (52.38%)



Royal Wootton Bassett and Cricklade Community Identified Priorities Newsletter. November 2017

Environment RWB and Cricklade Community Area

What has been done so far:

Priorities November 2016

1. Fly tipping and litter (74.12%)
2. Improving rights of way (42.35%)
3. Protecting the countryside (36.47%)

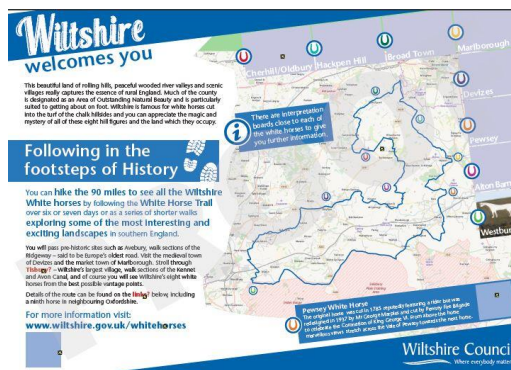
1. RWB&C is working well with the **Wiltshire Wildlife Trust** to run a campaign to reduce litter across the community area and encourage people to reduce their waste and re-use materials where possible - see their written report to find out more about their **Campaign Plan**, including dates for your diary and how you can get involved. Since the last newsletter, Jess and her team have been holding lots of sessions showing people how to have a waste-free Christmas, we hope you have been able to pop in and learn from them 😊

1. Existing interpretation boards for Wiltshire’s White Horses are hopefully soon to be replaced across the county, pending agreement by local Area Boards – this is a councillor initiative at today’s Area Board meeting. The signs will be updated with QR codes with links to further information about the Horses and the White Horse Trail (a walking route which links them together), audio and braille, to make the information available to more people and to encourage people to explore our beautiful county! Please find a draft of a new sign below.

2. Active community groups who have received community grant funding continue to make good progress improving rights of way, including the Purton Volunteers Footpath Group and Cricklade Dance Common.

CATG continues to work on this priority (see separate report).

3. The Bradenstoke parish will be taking part in the **WW1 tree planting legacy project**, thank you to the team here for your support in committing to planting and looking after the baby trees.





Royal Wootton Bassett and Cricklade Community Identified Priorities Newsletter. November 2017

Health, Wellbeing and Leisure

RWB and Cricklade Community Area

What has been done so far:

1. Have you heard of Action for Happiness? How about Happy Cafes? Do you know a café where the norm is to support local people and help make them smile? Please see here to find out more and get in touch if you know a business which might like to become involved in the local area:
<http://www.actionforhappiness.org/happy-cafe>

Priorities November 2016

1. Mental health (75.29%)
2. Healthy lifestyles (68.24%)
3. Support for carers (61.18%)

2. Would you be interested in getting involved with a therapy garden to help those in need, like the TWIGS Community Gardens in Swindon? Please contact your CEM if you would like to register your interest. Find out more about TWIGS here: <http://www.twigscommunitygardens.org.uk/>
2. A brand new, first of its kind **seated sports programme** is being launched in Royal Wootton Bassett this January.

The seated sports programme has been developed by Wiltshire Council's Sports Development team and the Royal Wootton Bassett and Cricklade Area Board. As part of the feedback from the joint strategic assessment process, local residents expressed that accessible sports provision for older residents was a key priority in the town.

The programme is an adapted sports offering for older people, people recovering from an illness or injury or perhaps those who wish to take the first steps to a healthier lifestyle. All sports and activities take place from a sitting position, allowing participants to take part in a low intensity, highly enjoyable form of physical activity.

The weekly session will take place from 10am to 11am each Thursday at Royal Wootton Bassett Memorial Hall and is free of charge for participants. The first session will take place on Thursday 18th January.

Cllr Allison Bucknell says "Taking part in a regular form of exercise is proven to be extremely beneficial to people of all ages. It is brilliant that we are able to offer something different to help those less able join in with sporting activities. Hopefully they will get the bug and soon be demanding all sorts of other exercise, and that we can have the fittest older population in Wiltshire!"

To register for the seated sports programme, or to request further information, please email SportsDevelopment@wiltshire.gov.uk or call Matthew Pearson, Sports Development Officer, on 07827 982279.



Royal Wootton Bassett and Cricklade Community Identified Priorities Newsletter. November 2017

Transport **RWB and Cricklade Community Area**

What has been done so far:

Priorities November 2016

1. Road improvement (81.18%)
2. Speeding and road safety (69.41%)
3. Access to public transport (65.88%)

1. The **Community Area Transport Group** agrees funding for road safety improvements - currently projects include a new footway in Purton, work around North Wall in Cricklade and more. There are 4/5 schemes that CATG can consider at any one time, please see the CATG report in the agenda pack.
3. The community area is lucky enough to have a **community MPV** which is available for community groups to use free of charge, subject to driver checks and registration. The vehicle is based at Lime Kiln in Royal Wootton Bassett and is already used by the local GP surgeries, Duke of Edinburgh Open Award Centre and the 3M's memory group in Lyneham. Please contact your Community Engagement Manager, alexa.davies@wiltshire.gov.uk, 01249 706610 if you would like to use this vehicle.



There are a number of local LINK schemes and the Purton Age Concern bus is also available locally – the group were successful in their application for £5,000 from the Area Board towards having a replacement bus. **Bradies Connect** timetables are now available from the Area Board section of the RWB library (at the back near the computers at present).

The 3Ms memory group continues to go well and numbers are very good. The group is desperate to find an occasional driver for when their main driver is on holiday. The driving is very straightforward but the driver does need to be very aware of people needing help with accessing the vehicle and securing seat belts etc.

*Please contact Zoe Millington if you can help:
zoemillington.wsun@btconnect.com*



Royal Wootton Bassett and Cricklade Community Identified Priorities Newsletter. November 2017

Housing

RWB and Cricklade Community Area

What has been done so far:

1. During the regular Area Board catch up, the housing theme from the JSA has been identified as the theme which the Area Board could do more to address.

Given this, the next Area Board meeting will have a loose housing theme. The meeting will take place on Wednesday 21st March at RWB Memorial Hall. GreenSquare will be presenting at the meeting about their local developments; work has commenced on a major GreenSquare redevelopment project bringing forward more affordable housing at Culverhay, Cricklade.

2. The Area Board is working closely with **GreenSquare** as the largest local housing association to help address the issues they face, for example in Cricklade the association have been linked to the digi-champions, for the digi-champions to offer support to GreenSquare residents. Funding has been also given to various GreenSquare projects, such as skate sessions for young people.
2. Commitment to the RWB&C **Child Poverty Action Plan** (as presented at the 20.07.16 Area Board meeting) is ongoing and the Area Board had a presence at this year's Child Poverty Summit to meet other local groups and organisations working to address this issue and learn more about what can be done to help.

In addition the Area Board continues to work in partnership with the Children's Centres and MOD Lyneham to help address issues relating to deprivation and poverty. The community hub in RWB is envisaged as a space for many more local projects and campaigns in 2018.

3. **Superfast Broadband continues to be rolled out across the county.**

Priorities November 2016

1. **Affordable housing (88.24%)**
2. **Deprivation and poverty (64.71%)**
3. **Digital engagement and broadband (48.24%)**



Royal Wootton Bassett and Cricklade Community Identified Priorities Newsletter. November 2017

LINKS TO USEFUL INFORMATION:

[WILTSHIRE INFORMATION NETWORK](#)

[WILTSHIRE JSA NETWORK](#) website

[ROYAL WOOTTON BASSETT & CRICKLADE AREA BOARD JSA report 2016-18](#)

RWB & C Project Bank – soon to be available on the revised ‘Our Community Matters’ website:

<http://rwbc.ourcommunitymatters.org.uk/>

For regular updates from the RWB&C Area Board ...

Follow us on Twitter - @RWBandCCEM

Facebook – Royal Wootton Bassett and Cricklade Area Board (Page)

AND sign up to *Our Community Matters* for your weekly *Royal Wootton Bassett and Cricklade local newsletter*: [here](#), we would love to hear from you.



Royal Wootton Bassett and Cricklade Investing in our Communities Newsletter January 2018

- Please note, all figures are subject to confirmation with our Finance team and as such must be treated as provisional.

	2017-18 allocation (£)	Invested to date (£)	Available for investment (£)	Amount leveraged (£)
GENERAL CAPITAL GRANTS	46,555	33,557	12,997.57	Tbc end of financial year
COMMUNITY AREA TRANSPORT GROUP (CATG)	46,535 (including contributions)	35,000	11,535	Tbc end of financial year
YOUTH GRANTS	21,235	20,603.70	241.30	N/a
HEALTH & WELLBEING / OLDER PERSON CHAMPION	7,700	7,700	Budget committed to appointment of Health & Wellbeing/ Older Person's Champion, Ellen Blacker	Tbc end of financial year

NEW GRANT APPLICATIONS January 2018

GENERAL GRANTS	Amount requested	Total project amount
<p>Cricklade leisure centre - seeking £1,346.00 towards a defibrillator to be sited outside the leisure centre (deferred from November meeting).</p> <p>Please view application here: http://services.wiltshire.gov.uk/areaboardgrants/grant_detail.php?gid=2568</p>	1,346.00	2692.00
<p>Noremarsch Junior School - seeking £5,000.00 towards completion of an all weather running track to enhance provision of all pupils and to extend the facilities available to the community.</p> <p>Please view the application here: http://thematrix.wiltshire.council/areaboard_grants/grant_get.php?gid=2597</p>	5,000.00	21,045.00



**Royal Wootton Bassett and Cricklade
Investing in our Communities Newsletter
January 2018**

Purton Parish Council – seeking £770.00 towards footpath improvement under the Paths Improvement Grant Scheme FP84.	770.00	1540.00
White Horse Trail councillor initiative (please see separate councillor initiative report)	250.00	250.00

COMMUNITY AREA TRANSPORT GROUP (CATG)	Amount requested	Total project amount
Please see separate CATG report.		



**Royal Wootton Bassett and Cricklade
Investing in our Communities Newsletter
January 2018**

GENERAL GRANTS/CLLR INITIATIVES UPDATE 2017-18

Meeting/Organisation	Amount awarded (£)	Total project amount (£)
November 2017		
Broad Town WI - £945.00 towards purchase and installation of a defibrillator on the outside of Broad Town Village Hall.	945.00	1995.00
Purton Parish Council - £4,612.50 towards ANPR and close circuit CCTV system at Purton Village Centre community facility.	4612.50	9225.00
Marston Meysey Village Hall Association - £5,000 towards replacement of the village hall roof.	5,000.00	24,300.00
Purton and District Age Concern - £5,000 for a new specialised minibus.	5,000.00	40,000
Wiltshire and Berkshire Canal Trust - £2,178.00 for finger posts and a mower for the Studley Grange site.	2,178.00	18,185.00
September 2017		
Purton Historical Society - £834.00 for a new Brockhurst Meadow information board.	834.00	834.00
July 2017		
Cricklade Camera Club - new laptop and projector equipment for the club	987.00	987.00
Purton War Memorial and Village Centre Charity - a new pedestrian safety gate	807.00	1614.00
May 2017		
Dance Common Management Group - reinstatement of stone wall for Cricklade Bloomers	5,000.00	18,575.00
The Cricklade Festival - signage for Cricklade festival and similar events	1,000.00	350.00
Tockenham Village Fair - trestle tables	998.40	998.40



Royal Wootton Bassett and Cricklade Investing in our Communities Newsletter January 2018

The Cricklade Band - new storage facility	992.03	992.03
Thames Pre-School - equipment to develop Forest School	350.00	350.00
Celebrating Age (Cllr initiative)	1,500	65,000

Residents come together socially and enjoy a Big Breakfast at Bushton Village Hall after Bushton and Clyffe Pypard WI volunteers cook up a storm in the kitchen!

This was helped by a community grant from the Royal Wootton Bassett & Cricklade Area Board towards the two new cookers ☺





**Royal Wootton Bassett and Cricklade
Investing in our Communities Newsletter
January 2018**

YOUTH GRANTS/COUNCILLOR INITIATIVES UPDATE 2017-18

November 2017	Amount awarded (£)	Total project amount (£)
Area Board initiative: £390.00 for 13 weeks Royal Wootton Bassett Memorial Hall hire @ £30 a session for new Seated Sports provision ().	390.00	390.00
May 2017		
GreenSquare - Cricklade Skate Scoot BMX session	1,050.00	1,600.00
Cricklade Youth Provision Proposal (CMAS) - to provide the structure and support for Cricklade youth provision from June 2017 to June 2018, for 46 weeks of the year.	10,750.00	10,750.00
H5 Adventure days for 200 young people – joint with RWB Mayor’s charity	3,000.00	6,000.00
Fun in the Sun - venue hire for rural sports programme in Purton	200.00	200.00
Support for Healthy Schools	Tbc - as dependent on the number of schools taking part = £1,860	Tbc based on current take up 6 schools x £310 = £1,860, registration closes Oct 2017
Launch 2 Learning - extension of project to Cricklade and Purton	3743.70	3,743.70



Royal Wootton Bassett and Cricklade Investing in our Communities Newsletter January 2018

USEFUL LINKS

Area Boards have authority to approve grants under powers delegated to them. Under the Scheme of Delegation Area Boards must adhere to the [Area Board Grants Guidance](#)

The community grant funding criteria and application forms are available on Wiltshire Council's website: [here](#).

Further information about the Community Area Transport Group (CATG) and youth grants can be found by clicking on the following links:

[Community Area Transport Group](#)

[Youth Grants](#).

Area Board Projects and Councillor Led Initiatives Application Form 2017/2018

To be completed by the Wiltshire Councillor leading on the project

Please ensure that you have read the Funding Criteria before completing this form

PLEASE COMPLETE ALL SECTIONS TO ENSURE THAT YOUR APPLICATION CAN BE CONSIDERED

1. Contact Details

Area Board Name	Royal Wootton Bassett and Cricklade Area Board		
Your Name	Alexa Davies, Community Engagement Manager		
Contact number	01249 706610	e-mail	alexandra.davies@wiltshire.gov.uk

2. The project

Project Title/Name	Wiltshire's White Horse Interpretation Boards		
Please tell us about the project /activity you want to organise/deliver and why? <i>Important: This section is limited to 900 characters only (inclusive of spaces).</i>	<p>It has been brought to our attention that the White Horse interpretation boards across the county are in a poor state and require replacement.</p> <p>This application is to replace the existing interpretation board at Broad Town with a new laminate sign (with new design and content), to be bolted on to an existing frame.</p> <p>The new sign will be complete with an audio descriptor and a QR code linking to further information about the White Horse and the walking trail which connects the horses across the county. The application includes installation of the new sign.</p> <p>The project will form part of a larger scheme to improve the information available at each of the White Horses in Wiltshire.</p> <p>A draft design has been produced and this will be circulated to relevant groups and organisations for comments prior to production.</p> <p>Cllr Paul Oatway and Cllr Allison Bucknell are Member sponsors.</p>		
Where is this project taking place?	Broad Town White Horse		
When will the project take place?	Signs to be installed Spring 2018		
What evidence is there that this project/activity needs to take place/be funded by the area board?	The poor state of existing signs has been picked up by members of the public who have complained that information is difficult to read. In addition, the interpretation boards are not accessible to those who are partially sighted or blind and lack a link to more detailed information.		

How will the local community benefit?	<p>The local community will benefit by having easy access to good information about their White Horse. The information will be accessible to a wider range of people due to the audio descriptor and improved legibility (with larger text and a better-quality sign).</p> <p>The website featured on the interpretation board will provide a map and description of a walking route between the White Horses. This will encourage people to get outside and explore the trail.</p>		
Does this project link to a current Community Issue?	The state of the information boards was initially raised as an issue by a local resident and this has grown into a county-wide piece of work.		
Does this project link to the Community Plan or local priorities? (if so, please provide details)	The project will encourage people to lead healthy lifestyles. The project supports the corporate aim to increase tourism in the county.		
Is this project supported by the Local Youth Network or Community Area Transport Group? (if it relates to young people or highways and transport)	Tbc, however local young people have stated use of local footways is a priority issue and improving signage could help with this.		
What is the desired outcome/s of this project? Improved provision of information at Wiltshire's White Horse sites.			
Who will be responsible for managing this project? Ken Oliver, Countryside Officer and Alexa Davies, Community Engagement Manager			
3. Funding			
What will be the total cost of the project?	£250		
How much funding are you applying for? Please note that only capital funding is available	£250		
If you are expecting to receive any other funding for your project, please give details	Source of Funding	Amount Applied For	Amount Received
	N/a	0	
Please give the name of the organisation and bank account name (but not the number) your grant will be paid in to. (N.B. We cannot pay money into an individual's bank account)	To be provided by Ken Oliver.		
4. Declaration – I confirm that...			
<input type="checkbox"/> The information on this form is correct and that any grant received will be spent on the activities specified - Yes <input type="checkbox"/> Any form of licence, insurance or other approval for this project will be in place before the start of the project outlined in this application - Yes			
Name: Alexa Davies		Date: 20.12.17	
Position in organisation: Community Engagement Manager, RWB&C			
Please return your completed application to the appropriate Area Board Locality Team (see section 3)			

Wiltshire welcomes you

This beautiful land of rolling hills, peaceful wooded river valleys and scenic villages really captures the essence of rural England. Much of the county is designated as an Area of Outstanding Natural Beauty and is particularly suited to getting about on foot. Wiltshire is famous for white horses cut into the turf of the chalk hillsides and you can appreciate the magic and mystery of all of these eight hill figures and the land which they occupy.

Following in the footsteps of History



You can **hike the 90 miles** to see all the **Wiltshire White horses** by following the **White Horse Trail** over six or seven days or as a series of shorter walks **exploring some of the most interesting and exciting landscapes** in southern England.

You will pass pre-historic sites such as Avebury, walk sections of the Ridgeway – said to be Europe’s oldest road. Visit the medieval town of Devizes and the market town of Marlborough. Stroll sections of the Kennet and Avon Canal, and of course you will see Wiltshire’s eight white horses from the best possible vantage points.

Details of the route can be found on the link below, including a ninth horse in neighbouring Oxfordshire.

For more information visit:
www.wiltshire.gov.uk/whitehorses



There are interpretation boards close to each of the white horses to give you further information.



Pewsey White Horse

The original horse was cut in 1785 reputedly featuring a rider but was redesigned in 1937 by Mr George Marples and cut by Pewsey Fire Brigade to celebrate the Coronation of King George VI. From above the horse marvellous views stretch across the Vale of Pewsey towards the next horse. Scan the QR code for audio information.





Cricklade, Purton and Royal Wootton Bassett Community Policing Team Update



Hello and welcome to this Community Policing Team report.

The purpose of these reports is to provide a short summary of the local issues in your area. Engaging with the public is vital for us as. Not only does it give us an opportunity to share what we are doing and keep our communities informed and up to date but it also provides an opportunity for our communities to feed back to us; what we're doing well, where we can make improvements and how we can work together to tackle local issues.

We hope you find these updates useful, for the latest news, crime prevention advice and appeals please follow us on:

Twitter <https://twitter.com/wiltshirepolice>

Facebook <https://www.facebook.com/wiltshirepolice/>

Or sign up to Community Messaging <https://www.wiltsmessaging.co.uk/>

Thank you for your continued support to Wiltshire Police.

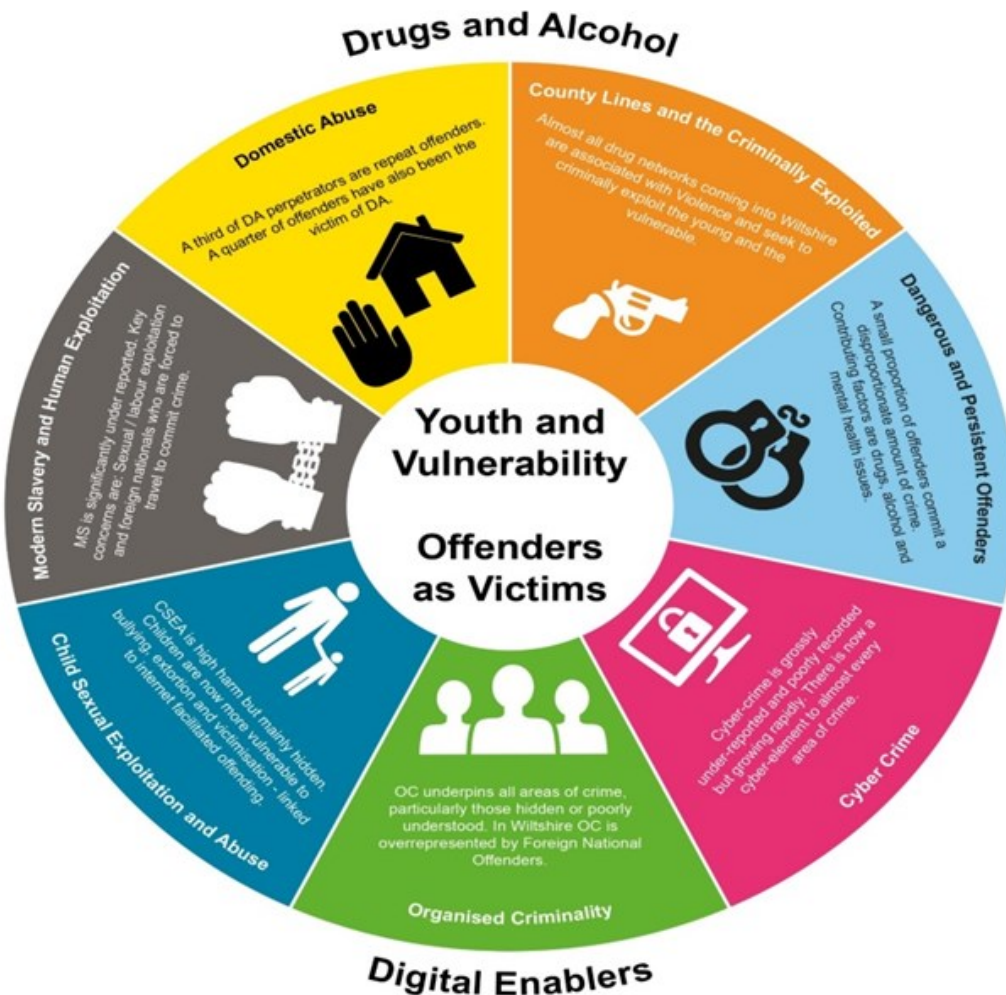
**Crimes that have an impact on the community
reported between 1st November 2017 and 2nd January 2018**

- ◇ On the 7th November at around 02:00 unknown suspects have forced entry to Bradon forest School, Purton however left without taking any items.
- ◇ Between 07:00 on 5th November and 21:00 on the 7th November unknown suspects have attempted to break in to St Mary's church in Cricklade however have been unsuccessful.
- ◇ Between 19:00 on the 19th November and 07:00 on 20th November unknown suspects have entered an insecure garage at a property in Squires Hill, Royal Wootton Bassett, made a search but not stolen anything.
- ◇ Between 16:45 on the 20th November and 08:30 on the 21st November unknown suspects have forced entry to a building site at The Hyde, Purton made a search of the site but not stolen anything.
- ◇ Between Midnight on the 19th November and Midnight on the 20th November unknown suspects have entered the victims shed at an address on High Mead, Royal Wootton Bassett and stolen a wireless speaker valued at £300.
- ◇ At approximately 11:00 on the 26th November unknown suspects have used a pick axe to gain entry to a barn situated at an address at The FORTY, Cricklade, stolen £2000 of game fowl and caused £500 worth of damage.
- ◇ Between 23:00 on the 3rd December and 07:30 on the 4th December unknown suspects have accessed a conservatory at an address on Baliffs Piece, Cricklade, and stolen a purse from within a handbag.
- ◇ At approximately 07:15 on the 6th December unknown suspects have entered a Business premises on the parade, Purton via climbing on to the roof and forcing entry, they have stole £850 in cash before making away from the scene.
- ◇ Between 06:30 and 20:30 on the 18th December unknown suspects have forced entry to a property on Preston Lane, Royal Wootton Bassett and stolen various items including jewellery and a laptop.
- ◇ Sometime on the 18th December unknown suspects have driven a ford transit van on to Windmill Hill Business park, Royal Wootton Bassett and stolen JCB concrete breaker from one of the business units.
- ◇ Between 13:30 and 19:00 on the 21st December unknown suspects have entered the victims address in Hook via a rear patio and stolen various items of Jewellery from within.

CONTROL STRATEGY

Below is our control strategy for your reference. This focuses on where how we conduct our operational Policing based on the Police & Crime Plan. We will continue to align our resources with the threat/harm/risks presented in line with the control strategy.

Domestic abuse, Cyber Crime, Organised criminality, County lines and the criminally exploited, Dangerous and persistent offenders, Child sexual exploitation and abuse, Modern slavery and human exploitation.



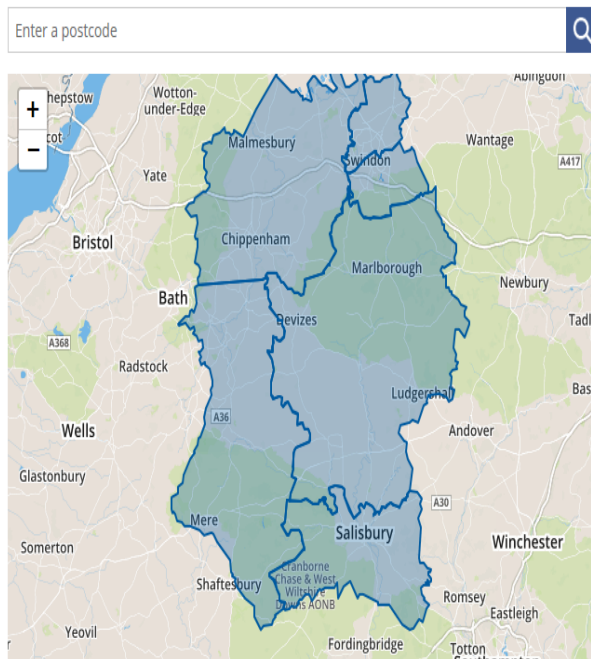
Wiltshire Police New Website Launched

On the 12th December Wiltshire Police launched its new website and I would encourage you all to take a look. Whilst the above summary gives an overview of Key Impact crimes in your area such as Burglaries and Thefts the interactive element of the website will allow you to see the stats of reports in your area and your local police contacts.

The website address remains unchanged and the interactive map can be found by following the below link.

<http://wspol-prd.storm50.com/article/832/Your-Area>

Click on your area below or enter your postcode to find local news, crime stats for your area and who your local officers are.



© Crown copyright and database rights (2017) Ordnance Survey (0100022031)

**You didn't think the morning after
could get any worse...**

You were wrong!

#SafeSeason

DRINK•DRIVE *Consequences*

- ★ Increase in car insurance costs
- ★ Job loss
- ★ Trouble getting in to countries like the USA
- ★ The shame of having a criminal record
- ★ Loss of independence

Local Priorities

The priorities, in the most simplistic form, are what officers are expected to be doing, and where they should be patrolling, when they are not responding to ongoing crimes or incidents, or not carrying out enquiries relating to those crimes and incidents.

The priorities are set every week and may be long term or short term. They are decided upon by Police Sergeant and Inspector using various information.

The priorities for the whole of this Community Policing Team in the Malmesbury and surrounding areas between July and August have included

- * Targeted patrols surrounding reports of thefts from motor vehicles and burglaries.
- * Pro active work to combat road related issues at both Minety and Hook Street.
- * Targeted patrols with regards to the Drink Drive campaign



The link below is for Community Messaging. The Community Coordinator for this area sends out a daily message, if there has been any crime that will benefit the community to be aware of. This includes thefts, scams and burglaries, the aim is to inform you of what is happening in your area, help you take any actions to avoid becoming a victim of crime and to alert you as a potential witness to any crime. Its easy to sign up and only messages, relevant to your area, are sent to your email inbox.

<https://www.wiltsmessaging.co.uk/>

The email address for the Wiltshire North Community Policing team is
northwiltshirecpt@wiltshire.police.uk
Please phone 101, or 999 in an emergency to report any incidents or
crimes

This report has been prepared by PC 2608 Stuart Welch



Royal Wootton Bassett and Cricklade Area Board – Report for 10th January 2018

Community Engagement

Cricklade fire station continues to support the local Fire Cadets and this section has been one of the longest standing cadet sections on the organisation. They have once again been part of the Christmas activities raising the profile of the section and also assisting their Operational colleagues with fund raising during the Christmas period.

Our campaign to highlight the problem caused by the parking of vehicles that may impede or delay Emergency Services from getting to their destination and allows us to educate the drivers / owners still gathers momentum and is having some success in the areas we have targeted or have been made aware of. The campaign went live in Wiltshire & Swindon on Monday 13th November and is titled 'Are We Getting Through' and is an ongoing campaign.

Attached is an overview of the leaflet to promote our campaign and local issues can be raised by contacting us at the local fire stations or by emailing myself on the email address below.

We continue to offer our Safe & Well visits and if you (or someone you know) needs a smoke alarm, some advice or are worried about what you would do in an emergency, contact us at; <http://www.dwfire.org.uk/safety/safe-and-well-visits/>

Response

Total Fire Calls for Cricklade Fire station; 23/10/17 – 25/12/2017

Category	Callsign	Total Incidents
False Alarm	52P1	1
Fire	52P1	4
Other	52P1	7
Special Service	52P1	3
Total	52P1	15

Other – This can be a movement to another fire station to provide fire cover during an ongoing incident or part of that incident.

Availability of On-Call appliance 52P1 Cricklade;

Appliance	Day (06:00 - 18:00)	Night (18:00 - 06:00)	Total
52P1	79.23%	96.36%	87.80%



Total Fire Calls for RWB Fire station; 23/10/2017 – 25/12/2017

Category	Callsign	Total Incidents
False Alarm	56P1	12
Fire	56P1	13
Other	56P1	6
Special Service	56P1	5
Total	56P1	36

Other – This can be a movement to another fire station to provide fire cover during an ongoing incident or part of that incident. The Water carrier also attended 4 fires in this period

Availability of On-Call appliance 56P1 RWB;

Appliance	Day (06:00 - 18:00)	Night (18:00 - 06:00)	Total
56P1	76.09%	98.68%	87.38%

On-Call Recruitment

As the Availability tables show, crewing of appliances during the day falls below our ideal expectations of 100%. We continue to strive and improve on the number of personnel at each station through our recruitment process so as we can increase the amount of hours our appliances are available for call outs and details of how to join our team are available on our website www.dwfire.org.uk or on our hotline 07122 691444

Recent Notable Incidents

Cricklade have attended a significant Road Traffic Collision on the A4319 which resulted in There have been a small number of fires in around the county which have attracted a large Fire Service presence (thatch house fire at Hodson which both RWB and Cricklade attended) but there have been no substantial incidents of note in the local area.

Community Safety Plan

Our Community Safety Plan is our vision until 2020 and can be found on the DWFRS website; <http://www.dwfire.org.uk/community-safety-plan/>

Matty Maggs

Station Manager Westlea, Cricklade and RWB

Email: Matthew.maggs@dwfire.org.uk

Tel: 01722 691173 | Mobile: 07595 966708



Royal Wootton Bassett and Lyneham – October to December 2017

SUMMARY:

Attendance at Sessions:

Royal Wootton Bassett

Numbers are still growing and workers are increasingly working outside the session time to support the needs of some of the young people. In attendance there are a number of young people who need additional support, some are registered with CAAMHS and others see the school counsellor, but all too often these services (like others) are full to capacity, so we play an additional, complementary role.

JD has been supporting a young person individually with family contact (with full support of the family and social services) and this has proved positive and has a good outcome so far.

The young people like the new room and have wanted to utilise the kitchen for cooking whenever possible. We have also included issue based sessions which include drug awareness (this is very much a current need in RWB as a lot of young people are exposed to or indulging in illegal drug use), also sexual health, healthy lifestyle and choices, discrimination awareness and various mental health issue based subjects.

Some of the young people in RWB have enjoyed art projects which we intend to build on in the new year. Sue Hughes has been present for some of the sessions and has engaged positively with the young people with a view to enlisting them onto the LYN committee so they have a voice in their community.

LYNEHAM

Summary overleaf

LYNEHAM

We have been back inside at Lyneham St. Michael's Hall, they have been as welcoming as ever to have us using the space. We meet weekly on Friday evenings. We have seen an increase in young people coming, but also a fair proportion have left recently due to military lifestyle.

We have facilitated a variety of sessions over the last few months led by young people's needs including various crafts and cooking projects and the usual issue based sessions. These have included drug awareness, sexual health, black history and diversity, bullying, e-safety and mental health. A few of the young people at Lyneham could benefit from more ongoing support with regard to mental wellbeing and self-care, and this is something we are working in to future programmes.

The big news is that, as of the end of January, we are moving out of St Michael's Hall and into the Community Centre on the edge of the military camp. In the past we have tried to do this on several occasions but haven't been able to maintain communication with the MOD "Families" staff. However, Amy Dallimore, the new community support worker, is very keen to work with us on this. She is – like us – keen to offer better provision to the young people of the community, both those from military families and those who are not. We are moving slowly, giving the young people plenty of notice, to make sure we take them with us in the move. We are sure this is really positive and can only enhance our work with young people due to better and more specific facilities for our age range.

ISSUES FACED:

RWB – We have a new room in the United Reform church, the Rev. Sarah Simpson has been very welcoming. However, with increasing numbers of (well-behaved but sometimes boisterous!) young people attending, it has become a balancing act keeping the people who manage the hall happy with young people using the hall. This has put added pressure onto the limitations of sharing a space – youth workers have to be extra mindful when in sessions and often feel they are policing the well-being of the building rather than working positively with young people. Due to the lack of youth-friendly community space in the Town we are protecting the relationship as well as we can!

On a similar note, our conversations with young people tell us that they do feel that they are unwelcome in some parts of the community and feel that they are constantly being 'moved-on' because they are congregating with friends somewhere other than at home. (Bear in mind – the young people who attend the youth club are largely well behaved and not criminal in any way.) They are aware that a purpose built shelter was mooted but then did not materialise. Some of these young people struggle to engage with adults they don't know because of feeling unsupported within the community. We have been working with Sue Hughes to engage them in the up-coming LYN, and hopefully the LYN committee will take this opportunity to better understand the needs and wants of young people in the community.

The current contract to deliver youth work in Royal Wootton Bassett and Lyneham ends at the end of March 2018. We would appreciate an indication from the Area Board whether they wish to continue post-March *as soon as possible* to enable us to a) plan for the new financial year of b) work out exit strategies for our work

Cricklade Youth Project Report – October-December 2017



SUMMARY:

Youth workers continued to engage with the young people we have targeted to work with. This can be a long process, especially when the method is street based with no prior, regular engagement. We have built good relationships with a group of about 12 young people who we see at least once a week, sometimes twice depending on weather and other considerations.

The young people's attendance is still irregular, especially due to the trend since October of their migration to a peer's property when there is an offer of shelter where they can smoke without fear of disruption. It has also become apparent that some of the older group have started to travel into Swindon to meet friends they have made through college and work.

The youth workers have started to engage with some younger young people whom to choose to hang out with the older group if the opportunity arises, some are siblings of the older ones, others are friends of the siblings, these are young people we need to engage with as some have admitted to smoking cannabis and need to be supported now to have any chance of facilitating positive choices. However, because of the dark night and weather, we have seen them in the past six weeks.

Workers continue to support the young people with advice and raise awareness of the continued use of cannabis (and some class A drugs) with regard to their mental health and lifestyle choices and general impact on their day to living. Of the young people in the group that started college in September, a large proportion have dropped out, some of which have found employment or apprenticeships locally

THREE MONTHS SESSIONS (with number of young people engaged with):

03/10/17 – 9 young people
05/10/17 – 0 young people
10/10/17 – 6 young people
17/10/17 – 8 young people
19/10/17 – 6 young people
23/10/17 – 3 young people
24/10/17 – 13 young people
31/10/17 – 12 young people
01/11/17 – 2 young people
08/11/17 – 9 young people
09/11/17 – 9 young people
15/11/17 – 4 young people
16/11/17 – 15 young people
22/11/17 – 0 young people
23/11/17 – 4 young people
29/11/17 – 9 young people
30/11/17 – 12 young people
6/12/17 – 5 young people
7/12/17 – 4 young people
13/12/17 – 12 young people
14/12/17 – 6 young people
20/12/17 – 6 young people
21/12/17 – 8 young people

SUMMARY (continued):

A couple of the young people we work with are now excluded from school, whilst one young person who was previously excluded has now gone back to school.

Both age groups are keen to having a room available for them, when asked why they want the room next to the leisure centre the opinions were:

- that it is easily accessible
- its next to the skate park
- and some of the older young people remember it as the old youth centre building.

Youth workers have explained to the young people who remember the old youth centre that it would now be a shared space so wouldn't have the same facilities as before but would be a positive move to meeting some of their needs as a starting point.

ISSUES FACED:

- Dark nights!
- Older group moving into Swindon and mixing with 18+ young adults
- Young people having somewhere to smoke cannabis without interruption has led to irregular numbers.

Engaging with these young people has not been an issue, however, building good regular relationships with them is a slow process to enable to build trust.

We need to focus on younger members of the group to assist them to make informed choices.

Lack of indoor space – now workers have started to build relationships with these young people it is important to move this group forward by having a regular, indoor space

CMAS organisational update

Community Mentoring and Support CiC (CMAS) continues to grow into one of the larger providers of youth work and services for young people in Gloucestershire and Wiltshire. Our three main areas of work remain:

- 1) Providing youth clubs for commissioning bodies such as town, parish and County Councils, and youth club committees
- 2) Providing one to one mentoring for young people who need bespoke, individual support
- 3) Providing alternative education for young people who, for one reason or another, cannot attend full time education

DECISION PLEASE...

Ben Evans met with Councillors from Lyneham, Purton, Cricklade and RWB in December and the issue of building use was discussed. It would be very useful to know if/when the building next to the Leisure Centre will be available so we can plan to move the young people in there in a structured way



Royal Wootton Bassett and Lyneham – October to December 2017

SUMMARY:

Attendance at Sessions:

Royal Wootton Bassett:

2nd October – 33 yp
9th October – 28 yp
16th October – 33 yp
23rd October – 34 yp
6th November – 32 yp
13th November 29 yp
20th November 30 yp
27th November – 32 yp
4th December – 32 yp
11th December – 32 yp
18th December – 29 yp

LYNEHAM:

6th October – 20 yp
13th October – 10 yp
20th October – 12yp
27th October – 9 yp
3rd November – 13 yp
10th November – 6 yp
17th November – 17 yp
24th November – 10 yp
1st December – 14 yp
8th December – 10 yp
15th December – 14 yp
22nd December – 13 yp

Royal Wootton Bassett

Numbers are still growing and workers are increasingly working outside the session time to support the needs of some of the young people. In attendance there are a number of young people who need additional support, some are registered with CAAMHS and others see the school counsellor, but all too often these services (like others) are full to capacity, so we play an additional, complementary role.

JD has been supporting a young person individually with family contact (with full support of the family and social services) and this has proved positive and has a good outcome so far.

The young people like the new room and have wanted to utilise the kitchen for cooking whenever possible. We have also included issue based sessions which include drug awareness (this is very much a current need in RWB as a lot of young people are exposed to or indulging in illegal drug use), also sexual health, healthy lifestyle and choices, discrimination awareness and various mental health issue based subjects.

Some of the young people in RWB have enjoyed art projects which we intend to build on in the new year. Sue Hughes has been present for some of the sessions and has engaged positively with the young people with a view to enlisting them onto the LYN committee so they have a voice in their community.

LYNEHAM

Summary overleaf

LYNEHAM

We have been back inside at Lyneham St. Michael's Hall, they have been as welcoming as ever to have us using the space. We meet weekly on Friday evenings. We have seen an increase in young people coming, but also a fair proportion have left recently due to military lifestyle.

We have facilitated a variety of sessions over the last few months led by young people's needs including various crafts and cooking projects and the usual issue based sessions. These have included drug awareness, sexual health, black history and diversity, bullying, e-safety and mental health. A few of the young people at Lyneham could benefit from more ongoing support with regard to mental wellbeing and self-care, and this is something we are working in to future programmes.

The big news is that, as of the end of January, we are moving out of St Michael's Hall and into the Community Centre on the edge of the military camp. In the past we have tried to do this on several occasions but haven't been able to maintain communication with the MOD "Families" staff. However, Amy Dallimore, the new community support worker, is very keen to work with us on this. She is – like us – keen to offer better provision to the young people of the community, both those from military families and those who are not. We are moving slowly, giving the young people plenty of notice, to make sure we take them with us in the move. We are sure this is really positive and can only enhance our work with young people due to better and more specific facilities for our age range.

ISSUES FACED:

RWB – We have a new room in the United Reform church, the Rev. Sarah Simpson has been very welcoming. However, with increasing numbers of (well-behaved but sometimes boisterous!) young people attending, it has become a balancing act keeping the people who manage the hall happy with young people using the hall. This has put added pressure onto the limitations of sharing a space – youth workers have to be extra mindful when in sessions and often feel they are policing the well-being of the building rather than working positively with young people. Due to the lack of youth-friendly community space in the Town we are protecting the relationship as well as we can!

On a similar note, our conversations with young people tell us that they do feel that they are unwelcome in some parts of the community and feel that they are constantly being 'moved-on' because they are congregating with friends somewhere other than at home. (Bear in mind – the young people who attend the youth club are largely well behaved and not criminal in any way.) They are aware that a purpose built shelter was mooted but then did not materialise. Some of these young people struggle to engage with adults they don't know because of feeling unsupported within the community. We have been working with Sue Hughes to engage them in the up-coming LYN, and hopefully the LYN committee will take this opportunity to better understand the needs and wants of young people in the community.

The current contract to deliver youth work in Royal Wootton Bassett and Lyneham ends at the end of March 2018. We would appreciate an indication from the Area Board whether they wish to continue post-March *as soon as possible* to enable us to a) plan for the new financial year of b) work out exit strategies for our work

Overview

NHS Wiltshire Clinical Commissioning Group (CCG) is responsible for commissioning a broad range of healthcare for the population of Wiltshire. We are led by experienced local GPs drawn from across the county, who provide clear clinical leadership to the big decisions affecting the future of healthcare provision in Wiltshire, carefully tailored to meet the differing needs of people locally.

Our vision is to ensure the provision of a health service which is high quality, effective, clinically-led and local. We are committed to delivering healthcare that meets the needs of Wiltshire people, to consult and engage with our population to enable them to be involved in decisions made about health services and to deliver those services to people in their own homes or as close to home as possible.

The right healthcare, for you, with you, near you

News from the CCG!

Small changes can help you and your loved ones stay well this Winter

Helping people to look after their own health, and their families' health, especially during the colder weather can help you stay well and it also helps to manage demand on health services.

By following eight simple self-care health steps, you and your loved ones can stay well this winter:

S – see your pharmacist at the first sign of illness

Pharmacists are not only medical experts; they can also offer advice and information on a range of minor illnesses and injuries. If you start to feel unwell this winter, even if it is just a cough or cold, get advice from your pharmacist before it gets more serious.

E – eat plenty of fruit and vegetables

A healthy diet is vital for your wellbeing, so try and eat five portions of fruit and vegetables every day.

L – learn more about around the clock healthcare services in Wiltshire

In Wiltshire there are many options available for when you need medical advice and treatment. Consider all the choices available to help you make the right decision about where to go.

F – find out if you're eligible for a free flu vaccine

People who are eligible include those who are aged 65 years, pregnant women, anyone who is the main carer for another person or who is in receipt of a Carers' Allowance, and those with a long term condition such as diabetes or asthma.

C – check in on your neighbours

Winter can be dangerous for elderly people, so checking they have enough supplies will mean they don't need to go out in bad weather.

A – arrange to pick up your prescription

Many pharmacies and GP surgeries will be closed or have reduced working hours over the festive period. If you require a repeat prescription, make sure you order it in plenty of time.

R – restock your medicine cabinet

Looking after yourself when you're feeling under the weather with a minor illness is easy if you already have a stocked medicine cabinet.

E – ensure you stay warm

Cold weather can be very harmful and increase the risk of heart attack, stroke and chest infections. Try and heat your home to at least 18 degrees and have at least one hot meal a day.

Have your say!

Urgent GP appointments – where would you go?

If you need a same day urgent GP appointment – this could mean that you might not be able to see your usual GP and you may have to travel to a different practice.

Urgent GP appointments are booked on the day and are for patients who have health problems which cannot wait for a routine appointment.

We want to hear your views on accessing urgent GP appointments.

Tell us what you think by completing this [short survey](#).



Raising concerns and making complaints

NHS England are carrying out a survey and asking children, young people and adults with a learning disability and/or autism about their experiences of raising concerns and making complaints.

Your feedback will help with a new project about raising concerns and making complaints called **Ask Listen Do**.

Complete the [survey](#), which is open until 12 January 2018 and help make a difference.

Campaigns

Every year we support a number of national health campaigns and run some local ones too.

Click on the images below to find out more about our current campaigns.

Stay well this winter
and have the flu jab



Around the clock
healthcare in Wiltshire

Celebrations as Healthwatch Wiltshire gets national recognition



(from left) Volunteers Mick and Marilyn Stowe with Stacey Plumb and Lucie Woodruff from Healthwatch Wiltshire

Volunteers and staff at Healthwatch Wiltshire are celebrating after being recognised by a prestigious national award for its excellent volunteering programme.

The Investing in Volunteers accreditation - the UK quality standard for good practice in volunteer management - has been awarded to Healthwatch Wiltshire, which has more than 60 volunteers on its books.

A celebration event was held at Melksham Football Club to thank all the volunteers for giving their time to gathering feedback on local health and care services over the last year. And a special cake was made to celebrate the achievement.

Stacey Plumb, Volunteer Officer at Healthwatch Wiltshire, said: “We’re thrilled to be recognised with this quality standard! Investing in Volunteers aims to improve the quality of the volunteering experience and for organisations to acknowledge the enormous contribution made by these dedicated volunteers.”

The Investing in Volunteers award is the gold standard for organisations who work with volunteers. Assessors from Investing in Volunteers visited the offices in Melksham to chat to volunteers and staff, and see its work in action. Healthwatch Wiltshire was assessed against a range of best practice standards and proved to excel in all aspects of working with its volunteers.

Helen Davies from Malmesbury, who has been a volunteer with Healthwatch Wiltshire for 18 months, said: “As a Healthwatch volunteer I have been involved in numerous projects, engaging with the public to get their views regarding the NHS.

“The Investing in Volunteers award that Healthwatch Wiltshire has recently received reflects the standards that are expected of us, as volunteers and the standards we can expect from the team. Volunteering with Healthwatch is a two way process which gives us the feeling of being valued, well trained and ultimately making a professional difference to the organisations we represent.”

Investing in Volunteers is managed by the UK Volunteering Forum and delivered by NCVO, Volunteer Scotland, Volunteer Now in Northern Ireland and Wales Council for Voluntary Action. Further information about the award, which will last for three years, can be found on iiv.investinginvolunteers.org.uk.

Or to find out more about volunteering with Healthwatch Wiltshire visit: healthwatchwiltshire.co.uk/volunteering.



Contact us:

Tel 01225 434218

info@healthwatchwiltshire.co.uk

healthwatchwiltshire.co.uk

Healthwatch Wiltshire is a local independent organisation which exists to speak up for people on health and care. If you have used a service recently then we would like to hear from you. We use what people tell us when we meet with the commissioners and providers of services to make sure that they take account of your views and experiences.

Update for Royal Wootton Bassett & Cricklade Area Board

Update from	Recycle for Wiltshire Joint Venture
Date of Area Board Meeting	10 January 2018

Headlines

- We ran workshops with the Wildlife Watchers afterschool club at St Mary's CE School Purton, doing a litter pick and making bird feeders for the school grounds.
- Aisling attended the RWB Christmas lights switch-on to announce the winners of the 'Drop the Rubbish Attitude' litter and recycling campaign competition we'd run with students from the Royal Wootton Bassett Academy, supported by RWB Town Cllr Sue Hughes. The winners went on stage and performed a poem! The final designs are with the printers and hopefully should be up in the town over the next few weeks.
- We came to the end of our sessions with Lyneham Primary School, all classes have had a waste workshop, encouraging them to reuse and reduce their rubbish and we ran the Waste Watchers Rewards Card scheme at the school.
- We've been in touch with other local Primary and Secondary Schools in the Area and are keen to work with them so please let us know if you can help us to book in our fun, free sessions.

- Jess visited Cricklade Gardening Club to make sure their members knew what could be recycled at home and to answer their questions about waste and recycling in Wiltshire.
- We ran a couple of fun Toiletries & Gift Sets workshops in Cricklade and RWB giving residents an opportunity to make their own Christmas presents and produce toiletries in reusable and recyclable packaging which don't contain any plastic microbeads.
- We also ran a couple of free Christmas crafts workshops in Cricklade and RWB making cards, recyclable wrapping paper and decorations out of waste.
- We took part in the Cricklade Christmas Tree Festival, decorating a tree on the theme of the 'First Noel' carol with upcycled decorations!
- In December Jess went to Cricklade Country Market and had a stand at RWB Farmers' Market where we spoke to over 100 people one cold, Saturday morning before Christmas to answer their questions and make sure they knew what could be recycled in Wiltshire household collections.
- We joined the Cricklade Bloomers for a fun, sociable wreath-making session where we made upcycled Christmas decorations.
- We ran a lovely Christmas craft session with residents at Bassett House, making reuse decorations and recyclable wrapping paper.
- During December we were on BBC Wiltshire three times talking about how to reduce waste and recycle more at Christmas and encouraging presenter Marie Lennon with her Plastic-free Christmas challenge.

- Chelsie's run waste workshops with children at Sunny Days Nursery in Lyneham and did a staff training session to share our reducing rubbish, increase recycling tips.
- We attended the Thames Pre-school Christmas Fayre in Cricklade making zero-waste Christmas cards

Update for Royal Wootton Bassett and Cricklade Area Board

from Royal Wootton Bassett Town Council

10 January 2018

- The Christmas Lights Event attracted its usual large and enthusiastic attendance. Many groups use the event to promote themselves to the community and it allowed the community to come together. It took some organising with 400 people directly involved with 187 entertainers, 100 stall keepers, 33 stewards and other volunteers, Thanks to others especially the council's security firm, St John's Ambulance, electrician's, councillor's and especially council staff for making this such a successful event.
- The council has had to say goodbye to Emily Maiden who left to pursue a career in journalism. She had been with the council for seven years and during that time had become a specialist in planning matters. She will be much missed.
- At the Market before Christmas, there was an event to promote the market and trading generally. Christmas Carols, Mince Pies, alcohol free mulled wine was served and thanks to the Cantanti Choir for performing.
- We marked the thirty years' service of the Town Clerk, Johnathan Bourne. There was a presentation attended by councillors, staff, past and present and family to mark his service to the town.
- At the last Full Council Meeting of the year the budget for 2018/19 was set. It was agreed to increase the precept to £939,215.00. This is an increase of £5.00 (2.57%) on a Band D property to £199.81. It was felt it was wise to do this to help cover major costs it will be incurring in the near future.
- The council considered the Wiltshire Council Plan Review Consultation Paper for the period to 2036. Amongst the comments were:

The scope is correct but there was insufficient time to consider it properly, it should reflect the need for a railway station, bypass and health centre, and Royal Wootton Bassett should not be considered as part of the same “Housing Market Area” as Swindon.

- The “Drop the Rubbish Attitude Campaign” organised by Wiltshire Wildlife Trust, Royal Wootton Bassett Academy and the Town Council through the Amenities Committee chaired by Cllr Sue Hughes, will be launched on Monday 8 January. Pupils at the Academy came up with innovative ideas and three of them presented their ideas to the Town Council. We are grateful for help with funding from the Town’s two Rotary Clubs and also discounted work from local printer Hulbert & Woodhall.

Cllr Steve Walls

Update for Royal Wootton Bassett & Cricklade Area Board

Update from	Cricklade Town Council
Date of Area Board Meeting	10 January 2018

Headlines/Key Issues

- **Community Asset Transfer**

At the Wiltshire Council Cabinet meeting held on 12th December, finances were approved for the Cricklade campus project. The project includes approval for the Asset Transfer of the Leisure Centre and Grounds, Ockwells (Council Offices, GP Surgery and Library) and a section of the Town Hall Car Park. The Leisure Centre will be renovated prior to handover and the project will be delivered by the end of 2019.

- **Neighbourhood Plan**

The final stage of introducing a Neighbourhood Plan for Cricklade is the public referendum. This part of the process is administered by Wiltshire Council and the electors of Cricklade will be invited to decide whether they wish the Neighbourhood Plan to be used by Wiltshire Council to help it decide planning applications. As we go to press the date for the referendum has not been fixed but we will advise you as soon as we know. Please keep up to date with progress by visiting the website: crickladenp.org.uk or speaking to the Deputy Town Clerk, Duncan May. The Draft Plan can be read on the website or on hard copy in our front office.

- **Cricklade Festival**

Main fundraising event for the 2018 Festival is to be held on Saturday 10th February at the Town Hall with entertainment provided by 'Felix and the Funk'. Tickets and more information available from the Council Offices.

-
- Please visit the Cricklade Town Council website for further details on these events, and others taking place over the next weeks

COMMUNITY AREA TRANSPORT GROUP ACTION / NOTES LOG

Royal Wootton Bassett and Cricklade CATG - Date of meeting: Wednesday 6th December 2017

Cricklade Town Council

COMMUNITY AREA TRANSPORT GROUP ACTION / NOTES LOG

	Item	Update	Actions and recommendations	Who
	Royal Wootton Bassett and Cricklade CATG – Date of meeting: Wednesday 6th December 2017			
1.	Attendees and apologies			
	Present:	Cllr Allison Bucknell (Chair, Lyneham) Cllr Bob Jones MBE (Cricklade and Latton) Cllr Jacqui Lay (Purton PC) Cllr Mollie Groom (RWB East) Cllr Chris Hurst (RWB South) Cllr Mary Champion (RWB North) Alexa Davies (Community Engagement Manager, WC) Steve Hind (Principal Engineer, WC) Martin Cook (Highway Engineer, WC) Cllr Dean Cobb (Lydiard Millicent PC) Cllr Rod Gill (Lyneham and Bradenstoke PC) Cllr Ray Thomas (Purton PC) Cllr Diana Kirby (Tockenham PC) Johnathon Bourne (Clerk, RWB TC) Cllr John Coole (Cricklade TC)		
2.	Notes of last meeting			

COMMUNITY AREA TRANSPORT GROUP ACTION / NOTES LOG

		The notes of the previous meeting were agreed.		
3.	Top 5 Priority Schemes (A List)			
a)	<p><u>Issue 1732</u></p> <p>Purton, Manor Hill.</p> <p>Proposed footway</p>	<p>Cost estimate £9600. Road closure required. PC contribution £2400 (25%) plus hedging and fencing.</p> <p>Road closure commenced on 27th Nov for 5 days.</p> <p>Ray Thomas liaison with landowner to ensure any hedge/ fencing requirements are undertaken after works completion.</p>	<p>This is now complete and an excellent job has been done. Purton PC and SH to finalise financial details outside of the meeting.</p> <p>Picture requested of the scheme on completion.</p> <p>This issue can be closed.</p>	<p>Purton PC/SH</p> <p>Purton PC</p>
b)	<p><u>Issue 3986</u></p> <p>The Forty/The Fiddle/ Chelworth Rd. HGV damage</p>	<p>06.12.17 – SH confirmed CTC would pay £2.5k and WC to pick up the remaining costs. This work should be completed by the next meeting.</p> <p>Signing scheme proposed is approved by Cricklade Town Council costing up to 5k. CTC agreed 50%</p> <p>Signs ordered and implementation programmed to be complete by 22nd Dec, although this is now likely to be delayed until Jan/Feb.</p> <p>Costs now likely to be around 8k due to additional works including bollards.</p>	<p>SH to complete work. Work should be complete by next meeting. The issue will then be closed.</p>	<p>SH</p>

COMMUNITY AREA TRANSPORT GROUP ACTION / NOTES LOG

		It was unclear as to where the budget for the additional works was coming from.		
c)	Issue 3629 Cricklade, Chelworth Rd - speeding	06.12.17 - SH informed this is a 2.5k total project, 50% funding from CTC would be sufficient. A proposal received from Cricklade TC, 40mph on the built up area for the western end of Chelworth Rd. This proposal is approved. Cost around 2.5k. To be approved at CATG meeting.	CTC to confirm with SH approval to contribute 1.25k to the project at planning meeting on 17.12.17. Once this has been notified, the project can commence.	Cricklade TC
d)	Issue 4490 Submitted 17/02/16 Road calming required on Station Road in Purton	06.12.17 - SH has put together scheme options, to be taken to the PC meeting in January. Estimated guide costs were circulated by SH. Ray Thomas confirmed Purton PC had budgeted to contribute 50% to the project. Discussed with Ray Thomas. Further consultation required from Purton PC.	Purton PC to sign off 50% contribution to the project at their 15.01.17 meeting (project cost estimated as £14k for this and issue 4458. PPC agreed up to £7k)	Purton PC
e)	Issue 4458 Submitted 02/02/16 Speeding Issue. Speed of traffic entering and leaving Purton at Widham by railway bridge.	Discussed with Ray Thomas Further consultation required from Purton PC	As above.	Purton PC

COMMUNITY AREA TRANSPORT GROUP ACTION / NOTES LOG

4.	Substitute Priorities (B List)			
a)	<p><u>Issue 4412</u></p> <p>Traffic management/ speeding/ parking at North Wall, High Street Junction, Cricklade.</p>	<p>07.12.17 - This looked to be progressed through routine management. This is likely to be dealt with by the next meeting.</p> <p>A review of waiting restrictions is taking place in Cricklade by Trevor Malton (WC network management team).</p> <p>Town council to progress approval for new parking area off North Wall.</p> <p>Waiting restrictions can be developed once approval process for parking area is complete.</p>	<p>No action.</p> <p>Leave on until Feb meeting with a view to closing at that meeting.</p>	
b)	<p><u>Issue 4567</u></p> <p><i>Submitted 29/03/16</i></p> <p>Speeding Broad Town</p>	<p>07.12.17 - Dave Thomas had attempted to contact the PC to discuss this issue, however they had not got back to him. To be left on agenda for one next cycle.</p> <p>Broad Town PC considering SIDS.</p> <p>SH had provided SID information to Broad Town PC. SH stated fixed SIDS were not effective, portable SIDS are preferred. WC policy is not to install permanently installed SIDS based on research. It was advised Broad Town identify a number of locations in each direction for potential SIDS and to move them about. This would need to be managed by the PC, so qualified</p>	<p>AD to contact - if they are pursuing SIDS this can be closed as a non-CATG issue.</p>	AD

COMMUNITY AREA TRANSPORT GROUP ACTION / NOTES LOG

		<p>manpower was required for a successful scheme. Posts could be put in place for SIDS to be fixed to.</p> <p>DT has tried to contact Broad Town PC and has not received a response.</p>		
c)	<p>Issue 5026</p> <p>Submitted 29/11/16</p> <p>Safety at B4069 junction Bradenstoke</p>	<p>07.12.17 - SH had a drawing to discuss signage with Bradenstoke. There had also been an issue further along the road at no. 9 The Banks down from the junction. Could a chevron or similar option be considered? This would be taken to the next PC meeting w/c 11.12.17.</p> <p>Signing and road marking scheme being developed for discussion with Bradenstoke PC</p>	To be considered at the next PC meeting w/c 11.12.17.	<p>Lyneham and Bradenstoke PC</p> <p>Move to A list for next CATG meeting.</p>
5.	Pending Priorities (C List) (Issues can be viewed in full from the Area Board Section on the Wiltshire Council Website)			
c)	<p>Issue 4465</p> <p>HGV drivers attempting to pass through Hollow Way Bradenstoke causing damage to the verges and disruption and potential danger to residents and Emergency services.</p>	<p>06.09.17 Weight restriction on B4069 was implemented in July.</p> <p>- Leave issue on CATG agenda for one more cycle.</p> <p>Submitted 04/02/16</p> <p>HGV Weight Restriction should be implemented July 2017</p> <p>Monitor after the weight restriction is in place.</p>	Close.	
d)	<p>Issue 4591</p> <p>No Right Turn-Lane -Junc opp Sally Pusseys pub Swindon Road</p>	<p>06.12.17 - SH advised negotiation had taken place with the pub and signage had been put in place.</p>	Close as nfa possible.	

COMMUNITY AREA TRANSPORT GROUP ACTION / NOTES LOG

		<p>06.09.2017 – Sally Pusseys had been contacted and were concerned over loss to business. AB advised the whole area would be affected by motorway improvements and the new crematorium.</p> <p>Mark Stansby's team is looking at this area. Close if work is complete.</p>		
e)	<p>Issue 4574</p> <p><i>Submitted 01/04/16</i></p> <p>Increasing amounts of traffic, Greenhill</p>	<p>07.12.17 - JL has written a letter to send to operators to improve issues, which can be amended and circulated by PCs.</p> <p>06.09.2017 – LM had asked for CSW volunteers and not been successful.</p> <p>LM PC requesting a metro count.</p> <p>Metrocount has been requested. Alexa Davies will check if results have been sent back</p>	<p>JL to send template to AD.</p> <p>There is nothing further that CATG can do so issue will be closed.</p>	JL
f)	<p>Issue 4505</p> <p><i>Submitted 25/02/16</i></p> <p>Speeding Along Nore Marsh Road RWB</p>	<p>07.12.17 - Johnathan Bourne informed RWB TC had allocated a CATG budget and are keen to consider CATG issues holistically for the whole town.</p> <p>06.09.2017 – if the school put in a request, traffic calming lights at critical times can be supplied if the school has an appropriate travel plan in place.</p> <p>High volume of traffic speeding vehicles especially trucks site traffic down Nore Marsh Road between Nore down Way and Washbourne Road Wootton Bassett. Refer to TC. Alexa to talk to</p>	<p>On Hold.</p> <p>CH, MC and MG to send one report identifying their priorities to RWB TC for consideration.</p>	CH, MC and MG

COMMUNITY AREA TRANSPORT GROUP ACTION / NOTES LOG

		<p>RWB TC with a view to metrocount after Network Rail works finished.</p> <p>Chris Hurst is trying to get a speedwatch scheme arranged and needs metrocount to be requested by Town Council.</p> <p>Cllr Paul Heaphy to talk to school to see if they want a non-TRO flashing 20mph scheme out side the school – CH will take this as casework.</p>		
g)	<p>Issue 5160</p> <p>Submitted 20/2/2017</p> <p>Safety concerns on A3102 towards RWB.</p>	<p>This junction should be completed by April 2018 and issues resulting from this resolved.</p>	Close.	
h)	<p>Issue 5083</p> <p>Submitted 10/1/2017</p> <p>Road priorities at Tadpole Lane, B4533 and the C70</p>	<p>06.12.17 – many related issues had been submitted relating to this area.</p> <p>Closing the road would have a big impact on the businesses concerned. A number of issues were relating to Cross Lanes. 5083 will be the issue. All other related issues to close.</p>	<p>Amend wording of issue on issues system to be more clear and consolidate all issues into this one. Designate action as:</p> <p>Review of Cross Lanes and investigate a solution.</p>	Move to A list for next CATG meeting.
i)	<p>Issue 5082</p> <p>Submitted 9/1/2017</p> <p>Safety concerns at Purton village centre.</p>	<p>06.12.17 - the Co-op have sent through some plans. The Co-op have informed SH they have no budget available. SH confirmed no S106 money was available. SH stated this issue is not a safety risk at present.</p>	<p>No action can be taken as will be looked at as part of planning application.</p>	

COMMUNITY AREA TRANSPORT GROUP ACTION / NOTES LOG

j)	Issue 5069 Submitted 5/1/2017 Car parking at Springfield Crescent and emergency vehicles.	White lines had gone in.	Close.	
k)	Issue 4866 Submitted 7/9/2016 Speed limit on Braydon Road	Not supported by PC.	Close - not supported by PC.	
l)	Issues from previous CATG meeting	06.09.2017 – 5 metro counts requested by resident and Purton PC. 5120, state of pavements in Purton. Station Road – RWB parking. Request for lighting in bus stop at The Wiltshire, RWB. Street name for Tockenham.	These issues were being processed. AD and CH to pick up. Close - CH to follow up as case work. All agreed by CATG. DK to inform of CATG approval.	AD/CH CH DK
7.	New issues submitted prior to 01.12.17			

COMMUNITY AREA TRANSPORT GROUP ACTION / NOTES LOG

	<p>5903 - Crosslanes junction, Packhorse Lane</p> <p>5892 - A3102 dangerous junction 06.12.17 - This is one issue to cover 3 areas; speeding (40-60mph limit), major issue with junction with Trow Lane and low bridge signage.</p> <p>5887 - traffic on the B4553 06.12.17 - Junction 16 is due to finish in April, the proposed road limit for Ridgeway Farm (580 units need to be sold for trigger point), temporary solution, all will be advised late 2018.</p> <p>5782 - double yellow lines request, Cliffords, Cricklade</p> <p>5761 - dangerous driving along Purton Road</p> <p>5691 - speeding at Greenhill</p> <p>CH noted pedestrian crossing issue had not been included. This was an error.</p>	<p>Refer to issue 5083 and close.</p> <p>General review requested. Move issue to A list priority for next CATG meeting.</p> <p>Close nfa at present.</p> <p>Close as not an issue for CATG and can be referred to BJ.</p> <p>5761 issue same response as 5887, collated issue.</p> <p>5691, issue same response as 4574, collated issue.</p>	<p>BJ</p>
8.	Substantive Highways Scheme		
	<p>06.09.2017 - Substantive Highways Schemes would need to be put forwards by 29th September 2017 for inclusion in the</p>	<p>The deadline for this has now passed.</p>	

COMMUNITY AREA TRANSPORT GROUP ACTION / NOTES LOG

		2018/19 schedule. This needs to be an existing developed project which had been cost estimated.		
9.	Finance – CATG Budget and Pavement and Footway Improvement Scheme			
		<p>06.12.17 - A list had been circulated by Martin Cook. To note: MC advised no traffic management costs are attached to the proposals.</p> <p>The Branscombe work had been completed.</p> <p>06.09.2017 - CATG budget, £14,205.10, in addition Footways and Pavements funding, £8,523.06. A briefing note was being prepared to set out the process for investment. MC had 7 on a list of footways needing resurfacing schemes (some of which had been completed). SH circulated further Finance information.</p>	<p>The CATG group agreed to put forwards the larger projects as substantive schemes (Bath Rd, Brynards Hill, Lyneham, Purton) and to complete the smaller schemes (<£1,000) using the identified budget (C415 x 2, Byron Avenue, Bardsey Close, Pintail Court, A3120).</p>	
10.	Other items			

COMMUNITY AREA TRANSPORT GROUP ACTION / NOTES LOG

	<p>Local Highways Investment Fund 2014-2020, Provisional Scheme List 2018/19, RWB&C Community Area</p>	<p>06.12.17 – a late item had been received for consideration by CATG regarding the Local Highways Investment Fund 2014-2020.</p> <p>Proposal confirmed:</p> <p>Royal Wotton Bassett & Cricklade Road 2018/19 Schemes (DfT Local Highways Maintenance Funding) Treatment</p> <p>B4042 B4042 Junction with B4696 to Coped Hall R/A (Part) Surface Treatment C124 C124/C116 Eysey to Marston Maisey Surface Treatment C114 C114 - A419 to Kempsford Surface Treatment UC The Beeches, Lydiard Millicent Surfacing C415 Station Road, Royal Wootton Bassett Surfacing</p> <p>Road 2018/19 Schemes (Additional sites with Investment Fund) Treatment</p> <p>C122 New Road, Royal Wootton Bassett Surfacing</p> <p>Various Various Footways Renewal – as per priority list agreed at meeting.</p>	<p>JL to speak to SH regarding how to add Queen Street, Purton.</p>	<p>JL/SH</p>
<p>11.</p>	<p>Date of Next Meeting: Wednesday 28th February 2018</p>			

COMMUNITY AREA TRANSPORT GROUP ACTION / NOTES LOG

Royal Wootton Bassett and Cricklade Area Board Community Area Transport Group

Highways Officer – Steve Hind

1. Environmental & Community Implications

- 1.1. Environmental and community implications were considered by the CATG during their deliberations. The funding of projects will contribute to the continuance and/or improvement of environmental, social and community wellbeing in the community area, the extent and specifics of which will be dependent upon the individual project.

2. Financial Implications

- 2.1. All decisions must fall within the Highways funding allocated to Royal Wootton Bassett and Cricklade Area Board.
- 2.2. If funding is allocated in line with CATG recommendations outlined in this report, and all relevant 3rd party contributions are confirmed, Wootton Bassett and Cricklade Area Board will have a remaining Highways funding balance of **£Tbc.**

3. Legal Implications

- 3.1. There are no specific legal implications related to this report.

4. HR Implications

- 4.1. There are no specific HR implications related to this report.

5. Equality and Inclusion Implications

- 5.1 The schemes recommended to the Area Board will improve road safety for all users of the highway.

6. Safeguarding implications

